

Basso continuo

Sinfonia Concertata in C minor

for violoncello piccolo & strings

III. Larghetto

Leonardo Leo (1694-1744)

edited by Niccolo Seligmann & Judith Klotz

Measures 1-5 of the bass line. Measure 1 is a whole rest. Measures 2-5 show a rhythmic pattern of eighth notes and quarter notes in C minor.

6

Measures 6-12. Measure 6 has a whole rest. Measures 7-12 contain eighth and quarter notes. Fingerings: 3# 6/4, 3# 6/4, 3# 6, *p* 6b, *f* 3# 6/4, 3# 6/4, *f* 7b.

13

Measures 13-20. Measure 13 has a whole rest. Measures 14-20 contain eighth and quarter notes. Fingerings: 6/5 3# 6, *f* 6/5 3# 6, *p* 6/5 3# 6, *f* 6/5 3#.

21

Measures 21-28. Measure 21 has a whole rest. Measures 22-28 contain eighth and quarter notes. Fingerings: 6, 6, 6, 6, 6, 6, 6, 6.

29

Measures 29-35. Measure 29 has a whole rest. Measures 30-35 contain eighth and quarter notes. Fingerings: 6, 6, 6, 6, 6, 6, 7, 6.

36

Measures 36-42. Measure 36 has a whole rest. Measures 37-42 contain eighth and quarter notes. Dynamics: *f*, *p*. Fingerings: 3# 6/4, 3#.

43

Measures 43-49. Measure 43 has a whole rest. Measures 44-49 contain eighth and quarter notes. Dynamics: *p*. Fingerings: 3#, 6.

2

50

Musical staff for measure 50, bass clef, key signature of one flat. The staff contains six measures of music. Fingerings are indicated by numbers 1-5 below the notes. The notes are: G2 (finger 5), A2 (finger 6), Bb2 (finger 7), C3 (finger 2), D3 (finger 4), E3 (finger 6), F3 (finger 3), G3 (finger 6), Ab3 (finger 3), Bb3 (finger 6), C4 (finger 3), D4 (finger 6), E4 (finger 3), F4 (finger 6), G4 (finger 3), Ab4 (finger 6), Bb4 (finger 3), C5 (finger 6). The piece concludes with a *p* dynamic marking.

57

Musical staff for measure 57, bass clef, key signature of one flat. The staff contains six measures of music. The notes are: G2 (finger 3), Ab2 (finger 3), Bb2 (finger 3), C3 (finger 3), D3 (finger 3), E3 (finger 3), F3 (finger 3), G3 (finger 3), Ab3 (finger 3), Bb3 (finger 3), C4 (finger 3), D4 (finger 3), E4 (finger 3), F4 (finger 3), G4 (finger 3), Ab4 (finger 3), Bb4 (finger 3), C5 (finger 3).

62

Musical staff for measure 62, bass clef, key signature of one flat. The staff contains six measures of music. The notes are: G2 (finger 3), Ab2 (finger 3), Bb2 (finger 3), C3 (finger 3), D3 (finger 3), E3 (finger 3), F3 (finger 3), G3 (finger 3), Ab3 (finger 3), Bb3 (finger 3), C4 (finger 3), D4 (finger 3), E4 (finger 3), F4 (finger 3), G4 (finger 3), Ab4 (finger 3), Bb4 (finger 3), C5 (finger 3). The piece concludes with a double bar line.

Sonata in A minor RV 44

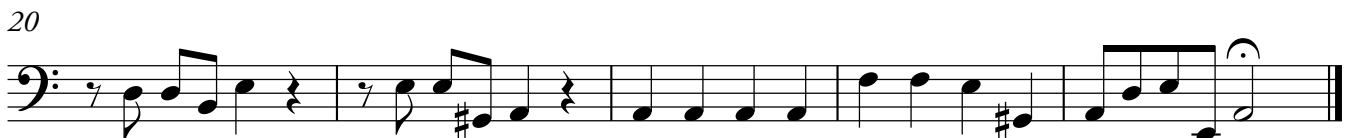
for violoncello

I. Largo

Basso continuo

Antonio Vivaldi (1678-1741)

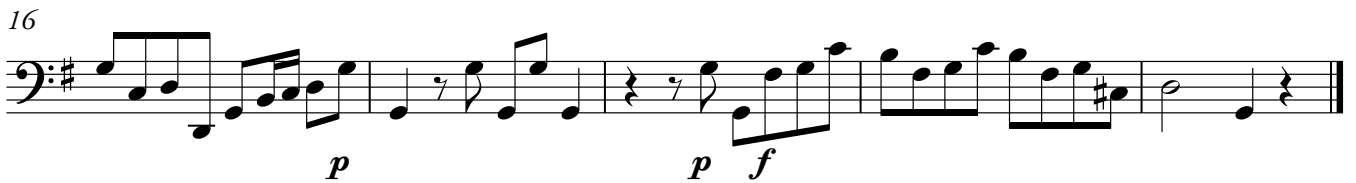
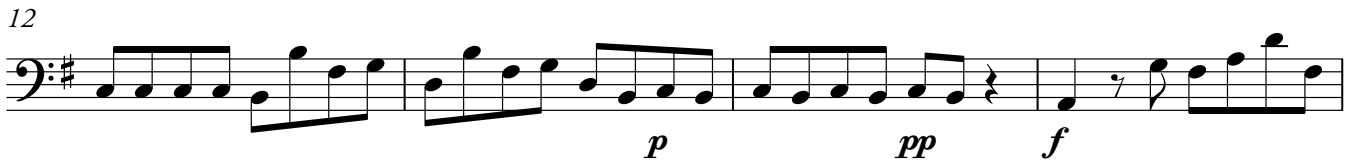
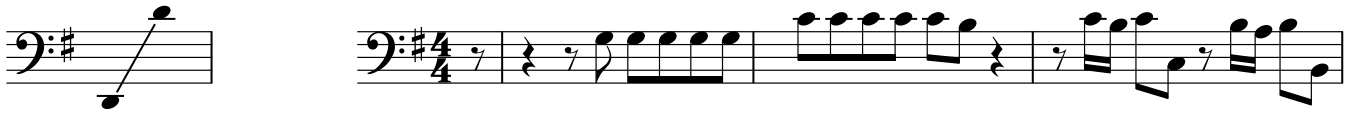
edited by Niccolo Seligmann & Judith Klotz



Sonata in G Major

for viola da gamba

Basso continuo

*I. Adagio*Johann Gottlieb Graun, (1703-1771)
edited by Niccolo Seligmann & Judith Klotz

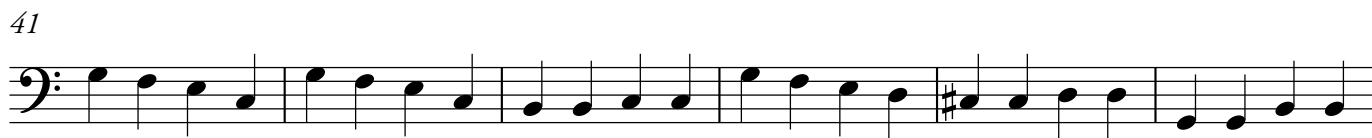
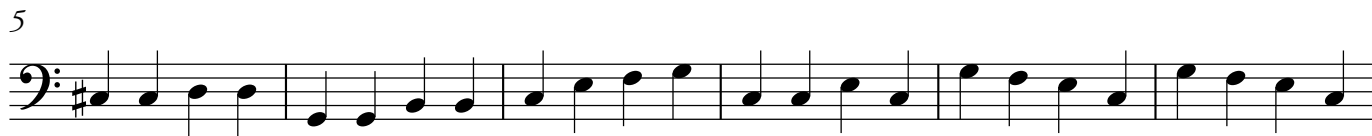
Cantata BWV 175 "Er rufet seinen Schafen mit Damen"

5

IV. "Es dünket mich, ich seh' dich kommen"

Basso continuo

Johann Sebastian Bach (1685-1750)
edited by Niccolo Seligmann & Judith Klotz



6

Basso continuo

47



53



59



65



71



77



83



89



95



Basso continuo

101



107



113



119



125



Cantata BWV 183: "Sie werden euch in den Bann tun"

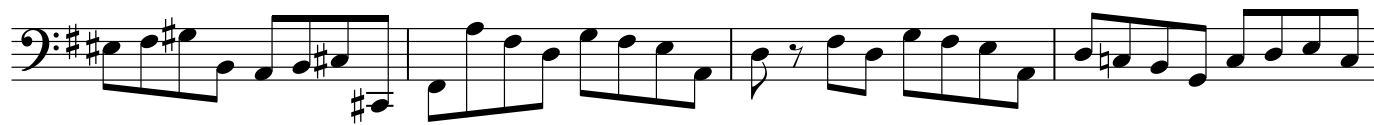
II. "Ich fürchte nicht des Todes Schrecken"

Basso continuo

Johann Sebastian Bach (1685-1750)
edited by Niccolò Seligmann & Judith Klotz*Fine*

Basso continuo

32



36



40



43



D. C. al Fine

Cantata BWV 41: "Jesu, nun sei gepreiste"

Basso continuo

IV. "Wofernen du den edlen Frieden"

Johann Sebastian Bach (1685-1750)

edited by Niccolo Seligmann & Judith Klotz

The image displays a musical score for the Basso continuo part of the fourth movement of Cantata BWV 41. The score is written on a single bass clef staff in 4/4 time. It begins with a repeat sign and a key signature of one sharp (F#). The music consists of a series of rhythmic patterns and melodic lines, with measure numbers 3, 7, 11, 15, 19, 23, 27, and 31 marked at the beginning of their respective lines. The notation includes various note values, rests, and accidentals, with a final sharp sign at the end of the piece.

Basso continuo

35

Fine

39

43

46

D. S. al Fine