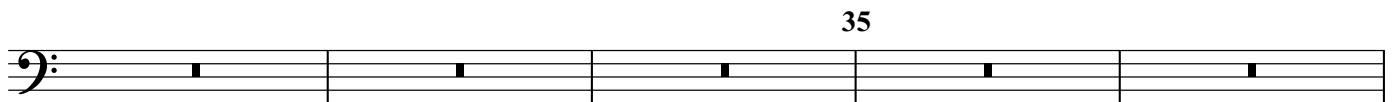
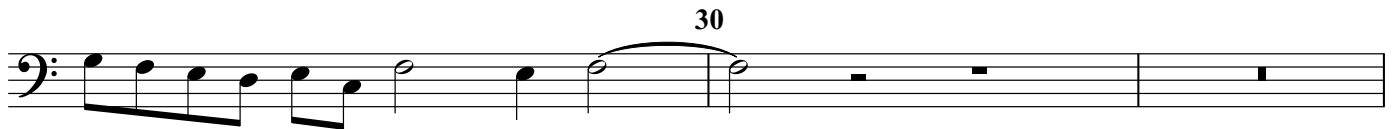
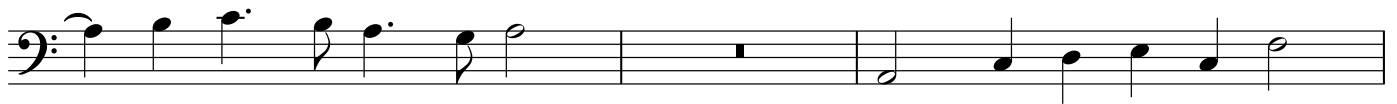
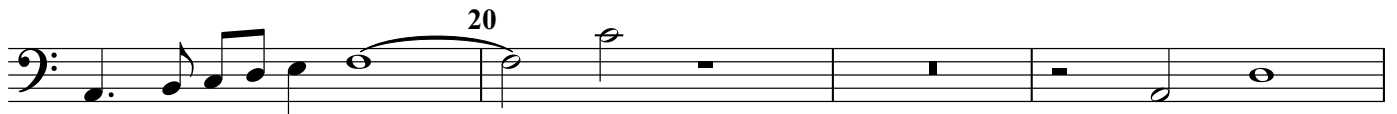
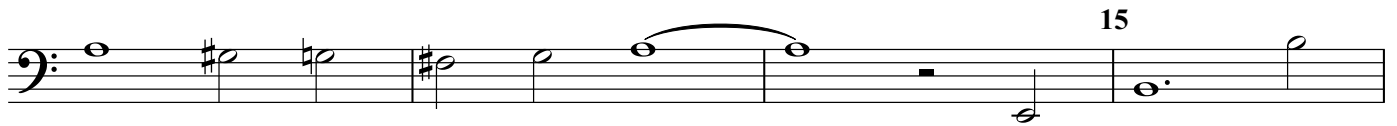


Fantasia No. 12

Bass viol 2

John Jenkins (1592-1678)
Edited by Martha Bishop



Fantasia No. 12: Bass viol 2

First musical staff in bass clef. It begins with a whole rest, followed by a sequence of eighth notes: G2, A2, B2, C3, D3, E3, F3, G3. This is followed by a dotted quarter note G3 with a flat, then a quarter note F3, and a half note E3. The staff concludes with a half note D3, a quarter note C3, and a whole rest.

40

Second musical staff in bass clef, starting at measure 40. It begins with a whole rest, followed by eighth notes: G2, A2, B2, C3, D3, E3, F3, G3. This is followed by a dotted quarter note G3, a quarter note F3, and a half note E3. The staff concludes with a half note D3, a quarter note C3, and a whole rest.

45

Third musical staff in bass clef, starting at measure 45. It begins with a whole rest, followed by eighth notes: G2, A2, B2, C3, D3, E3, F3, G3. This is followed by a dotted quarter note G3, a quarter note F3, and a half note E3. The staff concludes with a half note D3, a quarter note C3, and a whole rest.

Fourth musical staff in bass clef. It begins with a whole rest, followed by eighth notes: G2, A2, B2, C3, D3, E3, F3, G3. This is followed by a dotted quarter note G3, a quarter note F3, and a half note E3. The staff concludes with a half note D3, a quarter note C3, and a whole rest.

50

Fifth musical staff in bass clef, starting at measure 50. It begins with a whole rest, followed by eighth notes: G2, A2, B2, C3, D3, E3, F3, G3. This is followed by a dotted quarter note G3, a quarter note F3, and a half note E3. The staff concludes with a half note D3, a quarter note C3, and a whole rest.

55

Sixth musical staff in bass clef, starting at measure 55. It begins with a whole rest, followed by eighth notes: G2, A2, B2, C3, D3, E3, F3, G3. This is followed by a dotted quarter note G3, a quarter note F3, and a half note E3. The staff concludes with a half note D3, a quarter note C3, and a whole rest.

Seventh musical staff in bass clef. It begins with a whole rest, followed by eighth notes: G2, A2, B2, C3, D3, E3, F3, G3. This is followed by a dotted quarter note G3, a quarter note F3, and a half note E3. The staff concludes with a half note D3, a quarter note C3, and a whole rest.