

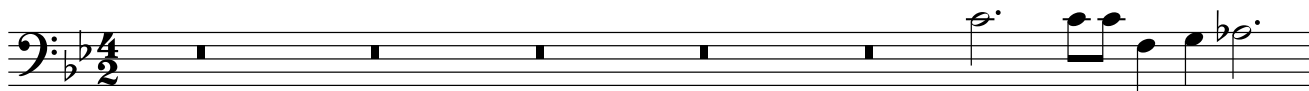
Fantasia No. 3

Bass Viol

John Jenkins (1592-1678)

Edited by Martha Bishop

5



10



15



20



25



30



First musical staff in bass clef with a key signature of two flats. It contains a sequence of eighth and quarter notes.

Second musical staff in bass clef with a key signature of two flats. It begins with a measure rest, followed by a sequence of eighth notes. A measure number '35' is positioned above the staff.

Third musical staff in bass clef with a key signature of two flats. It contains a sequence of eighth notes and quarter notes.

Fourth musical staff in bass clef with a key signature of two flats. It contains a sequence of eighth notes and quarter notes. A measure number '40' is positioned above the staff.

Fifth musical staff in bass clef with a key signature of two flats. It contains a sequence of eighth notes and quarter notes.

Sixth musical staff in bass clef with a key signature of two flats. It contains a sequence of eighth notes and quarter notes. A measure number '45' is positioned above the staff.

Seventh musical staff in bass clef with a key signature of two flats. It contains a sequence of eighth notes and quarter notes.

Eighth musical staff in bass clef with a key signature of two flats. It contains a sequence of eighth notes and quarter notes. A measure number '50' is positioned above the staff.

Ninth musical staff in bass clef with a key signature of two flats. It contains a sequence of eighth notes and quarter notes, ending with a double bar line. A measure number '55' is positioned above the staff.