

Fantasia No. 11

John Jenkins (1592-1678)
Edited by Martha Bishop

The image displays a musical score for a tenor viol, consisting of eight staves of music. The score is written in a 3/2 time signature and a key signature of one flat (B-flat). The notation includes various rhythmic values such as quarter, eighth, and sixteenth notes, as well as rests. Measure numbers 5, 10, 15, 20, and 25 are clearly marked above the staves. A flat symbol (b) is placed above the staff at measure 14. The music features a mix of melodic lines and rests, typical of early 17th-century lute or viol fantasias.



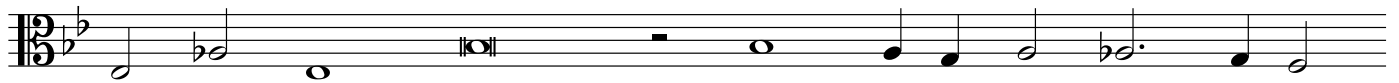
30



35



40



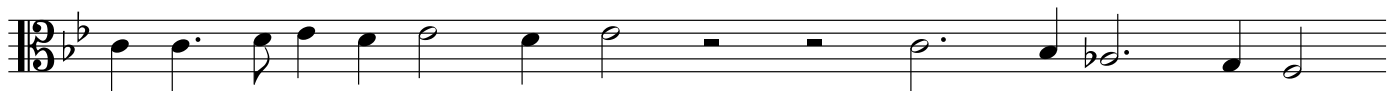
45



50



55



60

